



How to use the Amika® Pump Set Two Line giving set

The Amika pump set Two Line EasyBag giving set (product code 7751994) is compatible with all Fresenius Kabi EasyBag tube feeds. Also compatible with the Amika Pump HydroBag (product code 7751102) and the Fresubin® EasyBottle adaptor (product code 7989923).

Getting ready

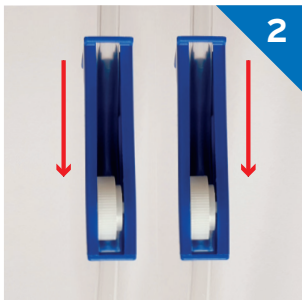
- Always refer to local guidelines
- Collect all equipment needed on a clean table or tray
 - 60ml enteral feeding syringe
 - Amika Two Line giving set
 - 2 x EasyBags at room temperature
OR 1 x EasyBag and 1 x Hydrobag
 - Water for flushing
- Wash and dry hands before and after feed administration

- Check EasyBag label and expiry dates. Shake EasyBag gently.
- Make sure patient sitting upright if possible (or head and shoulders raised by at least 30 degrees during feeding and for a short period afterwards, 45 mins is suggested)
- If nasogastric feeding, confirm tube position according to local policy
- Flushing feeding tube:
 - Fill syringe with 30-50ml of water or as advised by Dietitian and close clamp on tube (if present)
 - Attach syringe, open clamp on feeding tube and flush tube with water
 - Close clamp on feeding tube and remove syringe

How to administer the feed



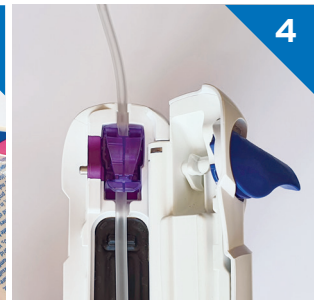
Close the purple clamp on the giving set



Close both roller clamps



Remove dust cover from giving set and spike each EasyBag / Hydrobag



Insert the purple clamp into Amika pump and close door



Hang the 2 EasyBags or EasyBag and Hydrobag on the drip stand



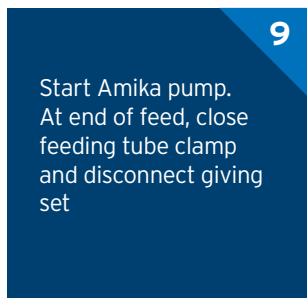
Prime giving set using the automatic prime function, **immediately** opening only **one** of the roller clamps



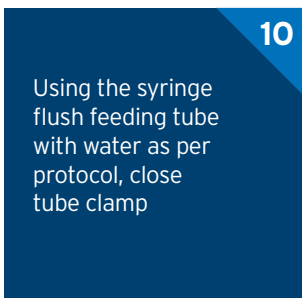
Once primed set prescribed flow rate and target volume, open the second roller clamp



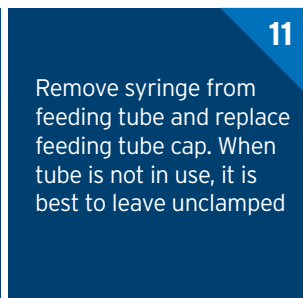
Attach end of giving set to the feeding tube, open feeding tube clamp



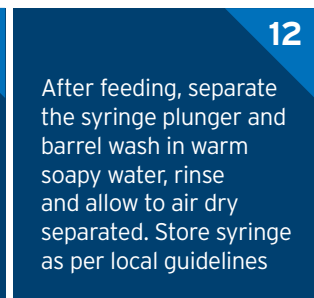
Start Amika pump. At end of feed, close feeding tube clamp and disconnect giving set



Using the syringe flush feeding tube with water as per protocol, close tube clamp



Remove syringe from feeding tube and replace feeding tube cap. When tube is not in use, it is best to leave unclamped



After feeding, separate the syringe plunger and barrel wash in warm soapy water, rinse and allow to air dry separated. Store syringe as per local guidelines